



Flight Plan & Site Survey

Created using **RPAS Wilco**®

Operation Name:	club st prime
Pilot Name:	[REDACTED]
Pilot Certificate:	[REDACTED]
Flight Start:	[REDACTED] 24, 2023 4:33 PM
Flight End:	January 24, 2023 6:33 PM
Flight Area (Latitude):	48° 35' 15.60" N (48.588)
Flight Area (Longitude):	72° 21' 0.10" W (-72.35)
Altitude - Radius:	Alt: 100 ft - Rad: 926.0 m (0.5 nm)
Airspace:	CONTROLLED
FIR - Contact:	CZUL - 506-867-7173
Weather:	-8.0 Celsius - Snow, Partially cloudy

Please ensure you received all required authorizations prior to flight.

Disclaimer

This Site Survey was created using RPAS Wilco by AIM Robotics. The flight plan contained is intended only for RPAS flights on the date/time and location specified. The user accepts all responsibility for the accuracy and completeness of the information contained.

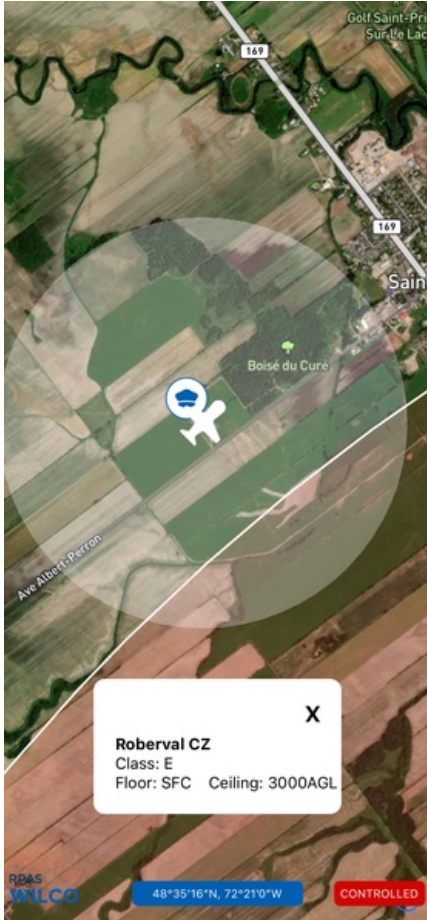
For the complete Terms & Conditions, see

<https://rpswilco.com/#/tnc>



Included

- Site Survey
- Obstacles (if available)
- Nearby Aerodromes
- Canadian Aviation Regulations
- GFA
- Aerodrome Supplements
 - METAR & TAF (if available)
 - NOTAMS
 - CFS

Flight Map



MAP Details

	Latitude	Longitude
 MODEL	48° 35' 15.60" N (48.588)	72° 21' 0.10" W (-72.35)
 Pilot	48° 35' 19.20" N (48.5887)	72° 21' 3.70" W (-72.351)

Airspace Classification



Overlying Airspaces

Class	Name	Floor	Ceiling
E	Roberval CZ	SFC	3000AGL
E	Roberval, QC TA	700AGL	12500MSL
B	Roberval, QC TA	12500MSL	18000MSL
E	Roberval, QC CAE	2200AGL	12500MSL
B	Roberval, QC CAE	12500MSL	18000MSL

Nearest Aerodromes & Distance from Operation

ROBERVAL (CYRJ AERODROME Cert)	Lat: 48.52	Long: 72.266	9.74 KM	5.26 NM
DOLBEAU ST FELICIEN (CYDO AERODROME Reg)	Lat: 48.777	Long: 72.375	21.133 KM	11.41 NM
POTVIN HELI BASE (CPH4 HELIPORT Reg)	Lat: 48.931	Long: 72.205	39.629 KM	21.4 NM
ALMA (CYTF AERODROME Cert)	Lat: 48.508	Long: 71.641	52.938 KM	28.58 NM

Weather Information for Mission Day

Summary: Partly cloudy throughout the day with morning snow.

Condition	Temperature	Feels Like	Precipitation	Visibility	Cloud Coverage	Wind Speed	Humidity
Snow, Partially cloudy	8.0 Celsius	15.5 Celsius	100.0 %	32.1 Km	76.0 %	36.0 kph	70.3 %

Canadian Aviation Regulations

Division III — General Operating and Flight Rules

For full listing please visit <https://laws-lois.justice.gc.ca/eng/regulations/SOR-96-433/FullText.html#s-901.27>

Visual Line-of-sight

- **901.11 (1)** Subject to subsection (2) no pilot shall operate a remotely piloted aircraft system unless the pilot or a visual observer has the aircraft in visual line-of-sight at all times during flight.
- **(2)** A pilot may operate a remotely piloted aircraft system without the pilot or a visual observer having the aircraft in visual line-of-sight if the operation is conducted in accordance with a special flight operations certificate — RPAS issued under section 903.03.

Procedures

- **901.23 (1)** No pilot shall operate a remotely piloted aircraft system unless the following procedures are established:
 - **(a)** normal operating procedures, including pre-flight, take-off, launch, approach, landing and recovery procedures; and
 - **(b)** emergency procedures, including with respect to
 - **(i)** a control station failure,
 - **(ii)** an equipment failure,
 - **(iii)** a failure of the remotely piloted aircraft,
 - **(iv)** a loss of the command and control link,
 - **(v)** a fly-away, and
 - **(vi)** flight termination.
- **(2)** If the manufacturer of the remotely piloted aircraft system provides instructions with respect to the topics referred to in paragraphs (1)(a) and (b), the procedures established under subsection (1) shall reflect those instructions.
- **(3)** No pilot shall conduct the take-off or launch of a remotely piloted aircraft unless the procedures referred to in subsection (1) are reviewed before the flight by, and are immediately available to, each crew member.
- **(4)** No pilot shall operate a remotely piloted aircraft system unless the operation is conducted in accordance with the procedures referred to in subsection (1).

Site Survey

901.27 No pilot shall operate a remotely piloted aircraft system unless, before commencing operations, they determine that the site for take-off, launch, landing or recovery is suitable for the proposed operation by conducting a site survey that takes into account the following factors:

- **(a)** the boundaries of the area of operation;
- **(b)** the type of airspace and the applicable regulatory requirements;
- **(c)** the altitudes and routes to be used on the approach to and departure from the area of operation;
- **(d)** the proximity of manned aircraft operations;
- **(e)** the proximity of aerodromes, airports and heliports;
- **(f)** the location and height of obstacles, including wires, masts, buildings, cell phone towers and wind turbines;
- **(g)** the predominant weather and environmental conditions for the area of operation; and
- **(h)** the horizontal distances from persons not involved in the operation.

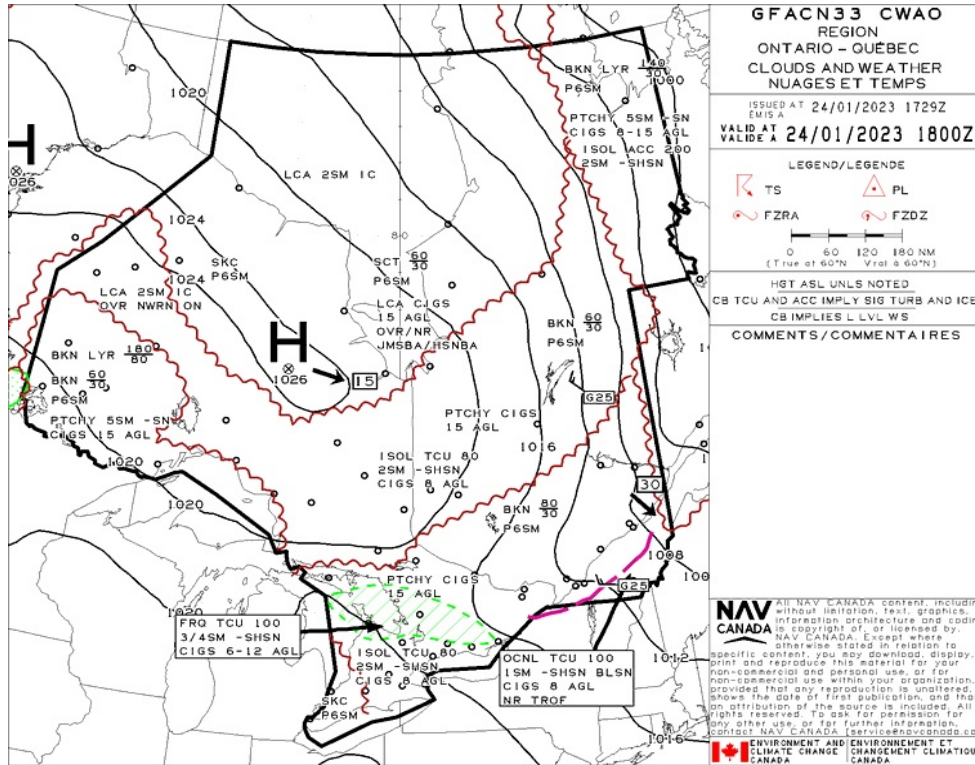
Operations at or in the Vicinity of an Aerodrome, Airport or Heliport

- **901.47 (1)** No pilot shall operate a remotely piloted aircraft at or near an aerodrome that is listed in the *Canada Flight Supplement* or the *Water Aerodrome Supplement* in a manner that could interfere with an aircraft operating in the established traffic pattern.
- **(2)** Subject to section 901.73 no pilot shall operate a remotely piloted aircraft at a distance of less than
 - **(a)** three nautical miles from the centre of an airport; and
 - **(b)** one nautical mile from the centre of a heliport.
- **(3)** No pilot shall operate a remotely piloted aircraft at a distance of less than three nautical miles from the centre of an aerodrome operated under the authority of the Minister of National Defence unless the operation is conducted in accordance with a special flight operations certificate — RPAS issued under section 903.03.

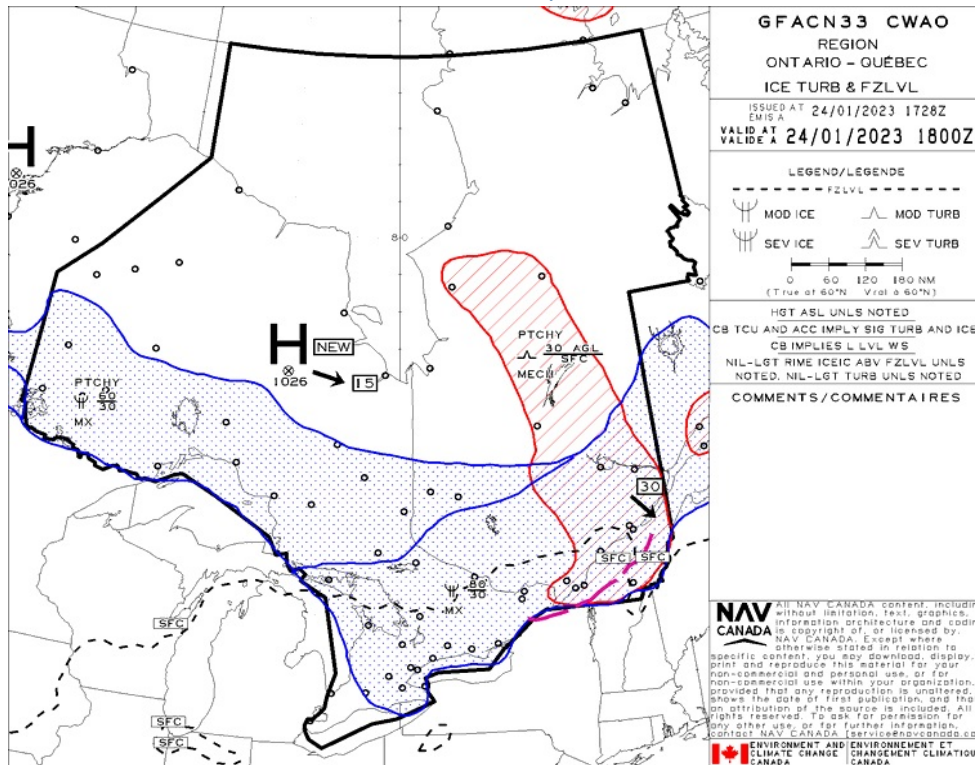
Records

- **901.48 (1)** Every owner of a remotely piloted aircraft system shall keep the following records:
 - **(a)** a record containing the names of the pilots and other crew members who are involved in each flight and, in respect of the system, the time of each flight or series of flights and
 - **(b)** a record containing the particulars of any mandatory action and any other maintenance action, modification or repair performed on the system, including
 - **(i)** the names of the persons who performed them,
 - **(ii)** the dates they were undertaken,
 - **(iii)** in the case of a modification, the manufacturer, model and a description of the part or equipment installed to modify the system, and
 - **(iv)** if applicable any instructions provided to complete the work.
- **(2)** Every owner of a remotely piloted aircraft system shall ensure that the records referred to in subsection (1) are made available to the Minister on request and are retained for a period of
 - **(a)** in the case of the records referred to in paragraph (1)(a), 12 months after the day on which they are created; and
 - **(b)** in the case of the records referred to in paragraph (1)(b), 24 months after the day on which they are created.
- **(3)** Every owner of a remotely piloted aircraft system who transfers ownership of the system to another person shall, at the time of transfer, also deliver to that person all of the records referred to in paragraph (1)(b).

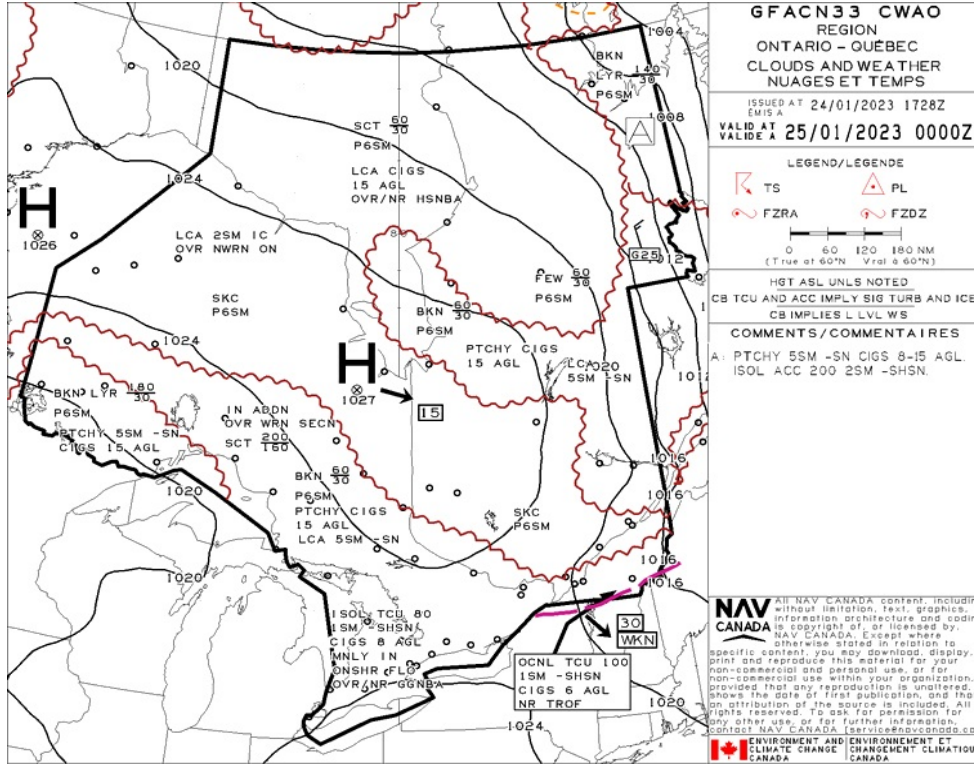
GFA Issue time + 00 hr - CLOUDS AND WEATHER



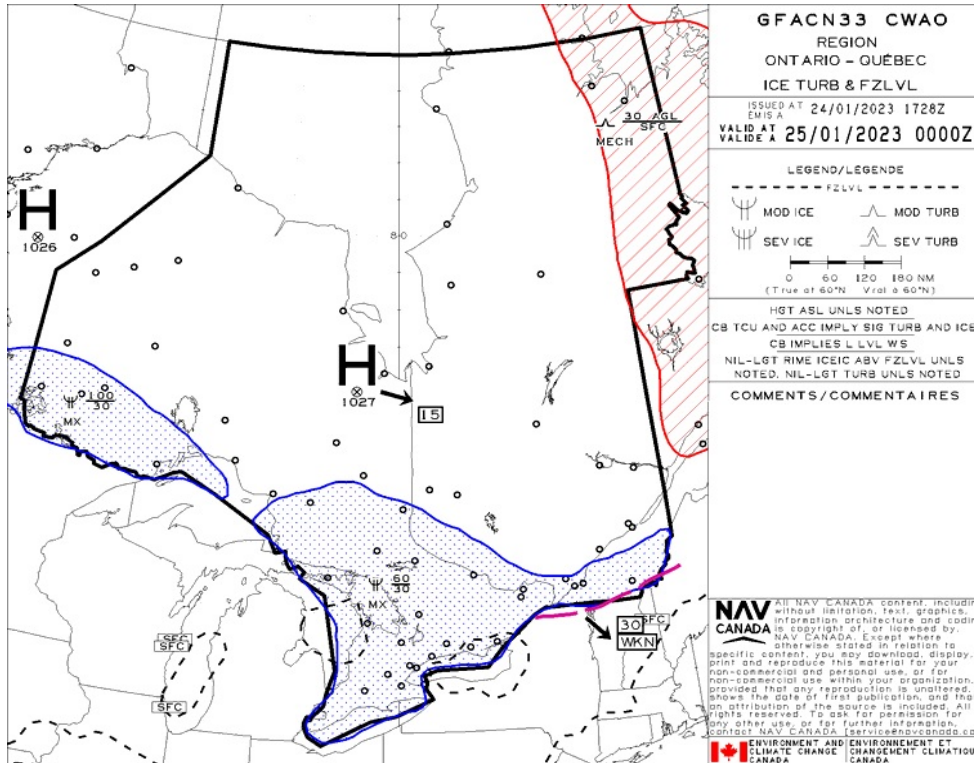
GFA Issue time + 00 hr - TURBULENCE, ICING AND FREEZING LEVEL



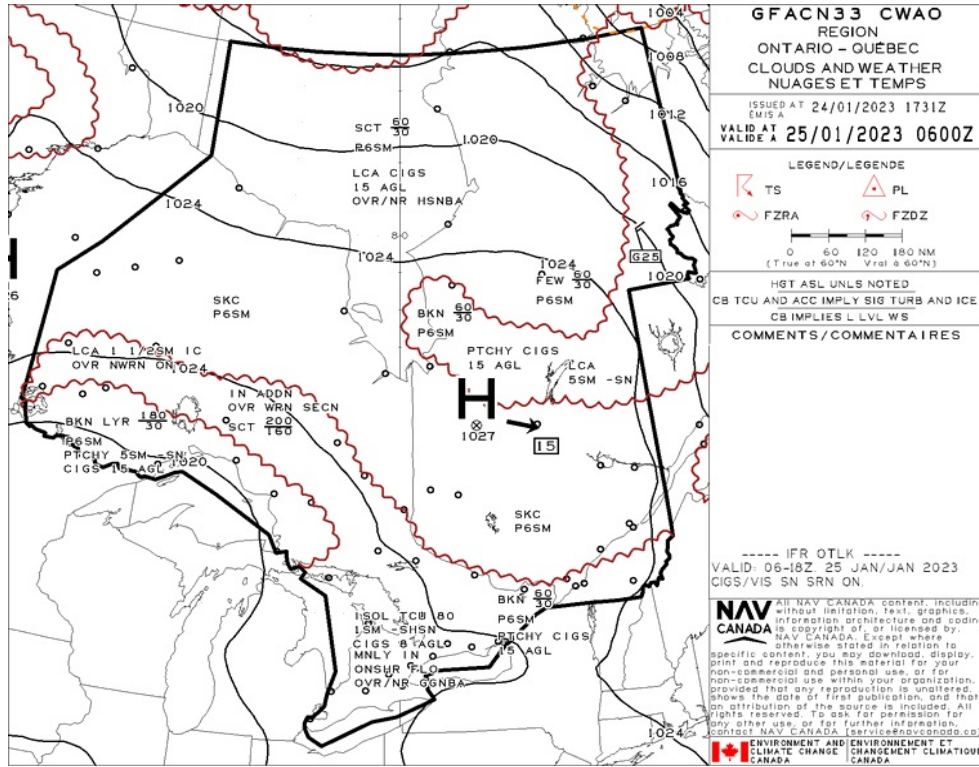
GFA Issue time + 06 hr - CLOUDS AND WEATHER



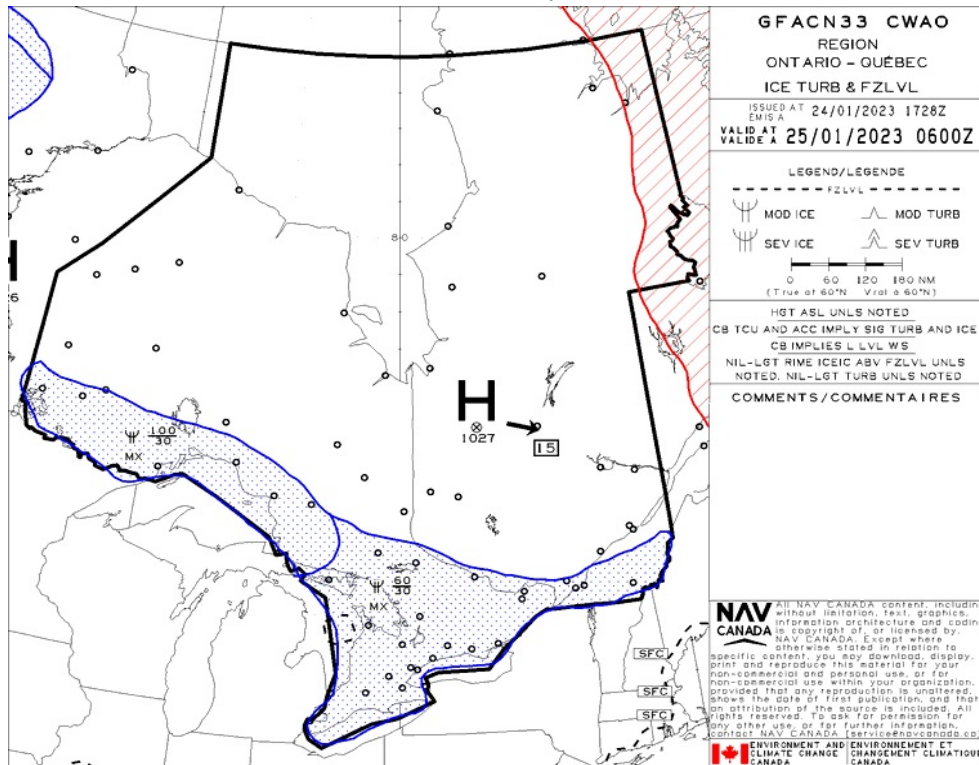
GFA Issue time + 06 hr - TURBULENCE, ICING AND FREEZING LEVEL



GFA Issue time + 12 hr - CLOUDS AND WEATHER



GFA Issue time + 12 hr - TURBULENCE, ICING AND FREEZING LEVEL





Flight Plan & Site Survey

ROBERVAL - CYRJ - Cert

METAR

METAR CYRJ 242100Z 30017G24KT 40SM DRSN FEW030 M09/M17 A2995
RMK SC1 SLP157=

METAR	LOCATION CYRJ - ROBERVAL/QC	DATE - TIME 24 JANUARY 2023 - 2100 UTC
WIND 300 TRUE @ 17 KNOTS GUSTS 24 KNOTS	VISIBILITY 40 STAT. MILES	RUNWAY VISUAL RANGE
WEATHER DRIFTING SNOW	CLOUDINESS FEW CLOUDS (1/8 - 2/8) 3000 FT	TEMP / DEWPOINT -9 C / -17 C
ALTIMETER 29.95 IN HG	RECENT WEATHER	WIND SHEAR

METAR CYRJ 242000Z 32019G25KT 40SM SCT033 M08/M15 A2989 RMK
SC3 PRESRR SLP136=

METAR	LOCATION CYRJ - ROBERVAL/QC	DATE - TIME 24 JANUARY 2023 - 2000 UTC
WIND 320 TRUE @ 19 KNOTS GUSTS 25 KNOTS	VISIBILITY 40 STAT. MILES	RUNWAY VISUAL RANGE
WEATHER	CLOUDINESS SCATTERED CLOUDS (3/8 - 4/8) 3300 FT	TEMP / DEWPOINT -8 C / -15 C
ALTIMETER 29.89 IN HG	RECENT WEATHER	WIND SHEAR

METAR CYRJ 241900Z 32017KT 40SM BKN030 M06/M13 A2982 RMK SC5
PRESRR SLP113=

METAR	LOCATION CYRJ - ROBERVAL/QC	DATE - TIME 24 JANUARY 2023 - 1900 UTC
WIND 320 TRUE @ 17 KNOTS	VISIBILITY 40 STAT. MILES	RUNWAY VISUAL RANGE
WEATHER	CLOUDINESS BROKEN CLOUDS (5/8 - 7/8) 3000 FT	TEMP / DEWPOINT -6 C / -13 C
ALTIMETER	RECENT WEATHER	WIND SHEAR

TAF

TAF CYRJ 241940Z 2420/2503 32012G22KT P6SM BKN030 TEMPO
 2420/2421 BKN020 FM242100 31012G22KT P6SM BKN030 TEMPO
 2421/2424 SCT030 FM250000 30010KT P6SM SCT030 TEMPO
 2500/2503 BKN030 RMK NXT FCST BY 251300Z=

TAF		LOCATION		VALIDITY [UTC]	
		CYRJ - ROBERVAL/QC		24 JAN - 1940 to 25 JAN - 0300	
TIMES [UTC]	WIND [DEGREES TRUE]	VISIBILITY [STAT. MILES]	WEATHER	CLOUDINESS [FEET AGL]	
24 JAN - 2000 to 24 JAN - 2100	320 @ 12 KNOTS GUSTS 22 KNOTS	6+	NIL	3000 BROKEN	
TEMPORARY CHANGES 24 JAN - 2000 to 24 JAN - 2100				2000 BROKEN	
24 JAN - 2100 to 25 JAN - 0000	310 @ 12 KNOTS GUSTS 22 KNOTS	6+	NIL	3000 BROKEN	
TEMPORARY CHANGES 24 JAN - 2100 to 25 JAN - 0000				3000 SCATTERED	
25 JAN - 0000 to 25 JAN - 0300	300 @ 10 KNOTS	6+	NIL	3000 SCATTERED	
TEMPORARY CHANGES 25 JAN - 0000 to 25 JAN - 0300				3000 BROKEN	
REMARKS					

NOTAM

(H0055/23 NOTAMR H3562/22
 Q) CZXX/QOEC/IV/NBO/E/000/999/5440N06941W999
 A) CZU CZQM CZQX B) 2301111839 C) 2304121800EST
 E) A ACFT, REGARDLESS OF THE STATE OF REGISTRY, DIRECT Y OR
 INDIRECT Y OWNED, CHARTERED, EASED, OPERATED OR OTHERWISE
 CONTROLLED BY A PERSON CONNECTED WITH EITHER THE RUSSIAN
 FEDERATION OR OF BE ARUS OR BY A CORPORATION OR ENTITY THAT IS
 INCORPORATED OR FORMED UNDER THE LAWS OF THE RUSSIAN FEDERATION
 OR BE ARUS, AND A OPERATORS HOLDING AN AIR OPERATOR CERTIFICATE
 (AOC) ISSUED BY RUSSIAN FEDERATION AND/OR BE ARUSIAN AUTHORITIES

ARE PROHIBITED TO ENTER, EXIT OR OVERFLY CANADA'S TERRITORIAL AIRSPACE (INCLUDING THAT WITHIN 12NM OF CANADA'S COASTS). EXCEPTIONS PERMITTED FOR ACFT EXPERIENCING INFLIGHT EMERG.

AUTH OBTAINED PRIOR TO 27 FEB 2022 FOR ACFT AND OPS SUBJECT TO THIS NOTAM ARE REVOKED.

HUMANITARIAN, SAR, MEDEVAC AND ANY OTHER FLT SEEKING AN EXCEPTION TO THIS RESTRICTION MUST RECEIVE AUTH GRANTED AFTER 27 FEB 2022 FM THE MINISTER OF TRANSPORT TO OPERATE IN CANADA'S TERRITORIAL AIRSPACE. AFFECTED ACFT WISHING TO OBTAIN SUCH AN AUTH OR CLR INTO CANADA'S TERRITORIAL AIRSPACE MAY APPLY TO THE MINISTER OF TRANSPORT AT 1-877-992-6853 OR 1-613-992-6853 OR BY EMAIL AT OPERATIONS.AVIATION(AT)TC.GC.CA.

FR:
TOUS AERONEFS, INDEPENDAMMENT DE 'ETAT D'IMMATRICULATION, DIRECTEMENT OU INDIRECTEMENT POSSEDES, AFFRETES, LOUES, EXPLOITES OU CONTROLÉS PAR UNE PERSONNE LIÉE AVEC LA FEDERATION RUSSE OU DU BEARUS OU PAR UNE SOCIÉTÉ OU UNE ENTITÉ INCORPORÉE OU FORMÉE EN VERTU DES LOIS DE LA FEDERATION RUSSE OU DU BEARUS, ET TOUS LES EXPLOITANTS DÉTENANT UN CERTIFICAT D'EXPLOITANT AÉRIEN (CEA) ÉMIS PAR LA FEDERATION RUSSE ET/OU LES AUTORITÉS DU BEARUS SONT INTERDITS D'ENTRER, DE SORTIR OU DE SURVOLER L'ESPACE AÉRIEN TERRITORIAL DU CANADA (Y COMPRIS CE QUI A MOINS DE 12 MILES NAUTIQUES DES CÔTES CANADIENNES). EXCEPTIONS PERMISES POUR LES AERONEFS SUBISSANT DES URGENCES EN VOL.

TOUTES LES AUTORISATIONS OBTENUES AVANT LE 27 FEB 2022 POUR LES AERONEFS ET LES OPERATIONS SOUMIS A CE NOTAM SONT REVOQUEES.

LES VOIS HUMANITAIRES, SAR, MEDEVAC ET TOUT AUTRE VOL RECHERCHANT UNE EXCEPTION A CETTE RESTRICTION DOIVENT RECEVOIR UNE AUTORISATION ACCORDEE APRES LE 27 FEB 2022 PAR LE MINISTRE DES TRANSPORTS POUR OPERER DANS L'ESPACE AERIEEN TERRITORIAL DU CANADA. LES AERONEFS AFFECTES SOUHAILANT OBTENIR UNE TERCHE D'AUTORISATION OU D'ENTRER DANS L'ESPACE AERIEEN TERRITORIAL CANADIEN PEUVENT FAIRE UNE DEMANDE AU MINISTRE DES TRANSPORTS AU 1-877-992-6853 OU 1-613-992-6853 OU PAR COURRIEL A OPERATIONS.AVIATION(AT)TC.GC.CA)

(H0221/23 NOTAMN
Q) CZU /QCAAS/IV/B/E/000/240/4529N07346W200
A) CZU B) 2301241916 C) 2301242359
E) MONTREAL CENTRE FREQ 132.85MHZ U/S

FR:
CENTRE DE MONTREAL FREQ 132.85MHZ U/S)

(H0137/23 NOTAMR H0132/23
Q) CZXX/QXXX/I/NB0/W/000/999/5243N05321W999
A) CZU CZX CZQM B) 2301181713 C) 2301260901
E) AIRSPACE SECURITY WARNING ISSUED BY THE DEPARTMENT OF TRANSPORT IN RESPONSE TO THE SECURITY SITUATION IN NORTH KOREA. CANADIAN AIR OPERATORS AND OWNERS OF AIRCRAFT REGISTERED IN CANADA ARE ADVISED NOT TO ENTER THE PYONGYANG FIR (ZKPP), DUE TO POTENTIAL RISK TO AVIATION FROM BALLISTIC MISSILE LAUNCHES WITHOUT PRIOR NOTICE. THIS NOTAM SUPERSEDES THE RESTRICTIONS CONCERNING NORTH KOREA ISSUED IN AIC 35/22.

FR:
AVERTISSEMENT RELATIF A LA SECURITE DE L'ESPACE AERIEEN ÉMIS PAR LE MINISTRE DES TRANSPORTS EN REPONSE A LA SITUATION DE SECURITE EN COREE DU NORD. ON RECOMMANDE AUX EXPLOITANTS AERIENS CANADIENS ET PROPRIETAIRES D'AVIONS IMMATRICULES AU CANADA DE NE PAS PENETREER DANS LA REGION D'INFORMATION DE VOL DE PYONGYANG (ZKPP), EN RAISON DU RISQUE POTENTIEL POUR L'AVIATION AUX ANCIENS DE MISSILES BALLISTIQUES SANS PREAVIS EN COREE DU NORD. CE NOTAM REMPLACE LES RESTRICTIONS CONCERNANT LA COREE DU NORD PUBLIEES DANS L'AIC 35/22.)

(B5831/23 NOTAMR B5779/23
Q) CZU /QFAXX/IV/NB0/A/000/999/4831N07216W005
A) CYRJ B) 2301241918 C) 2301250318
E) RSC 16 6/6/6 DRY, DRY, DRY. 140FT WIDTH. REMAINING WIDTH COMPACTED SNOW. VA ID JAN 24 1918 - JAN 25 0318.

RSC 34 6/6/6 DRY, DRY, DRY. 140FT WIDTH. REMAINING WIDTH COMPACTED SNOW. VA ID JAN 24 1918 - JAN 25 0318.

ADDN NON-GRF/TA PA INFO:
CRFI 16 NR/NR/NR.
CRFI 34 NR/NR/NR.

FR:
RSC 16 6/6/6 SECHE, SECHE, SECHE. 140FT DE NEIGE ARGEUR. ARGEUR RESTANTE NEIGE DURCIE. VA IDE JAN 24 1918 - JAN 25 0318.

RSC 34 6/6/6 SECHE, SECHE, SECHE. 140FT DE NEIGE ARGEUR. ARGEUR RESTANTE NEIGE DURCIE. VA IDE JAN 24 1918 - JAN 25 0318.

INFO ADDN NON-GRF/TA PA:
CRFI 16 NR/NR/NR.
CRFI 34 NR/NR/NR.)

DOLBEAU-ST-FELICIEN - CYDO - Reg

NOTAM

(H0137/23 NOTAMR H0132/23
Q) CZXX/QXXX/I/NBO/W/000/999/5243N05321W999
A) CZU CZQX CZQM B) 2301181713 C) 2301260901
E) AIRSPACE SECURITY WARNING ISSUED BY THE DEPARTMENT OF TRANSPORT IN RESPONSE TO THE SECURITY SITUATION IN NORTH KOREA. CANADIAN AIR OPERATORS AND OWNERS OF AIRCRAFT REGISTERED IN CANADA ARE ADVISED NOT TO ENTER THE PYONGYANG FIR (ZKPP), DUE TO POTENTIAL RISK TO AVIATION FROM BALLISTIC MISSILES LAUNCHED WITHOUT PRIOR NOTICE. THIS NOTAM SUPERSEDES THE RESTRICTIONS CONCERNING NORTH KOREA ISSUED IN AIC 35/22.

FR:
AVERTISSEMENT RE ATIF A LA SECURITE DE L'ESPACE AERIEN EMIS PAR LE MINISTRE DES TRANSPORTS EN REPONSE A LA SITUATION DE SECURITE EN COREE DU NORD. ON RECOMMANDE AUX EXPLOITANTS AERIENS CANADIENS ET PROPRIETAIRES D'AVIONS IMMATRICULES AU CANADA DE NE PAS PENETRER DANS LA REGION D'INFORMATION DE VO DE PYONGYANG (ZKPP), EN RAISON DU RISQUE POTENTIEL POUR L'AVIATION AUX BORDS DES MISSILES BALLISTIQUES SANS PREAVIS EN COREE DU NORD. CE NOTAM REMPLACE LES RESTRICTIONS CONCERNANT LA COREE DU NORD PUBLIEES DANS L'AIC 35/22.)

(B5809/23 NOTAMR B5730/23
Q) CZU /QFAXX/IV/NBO/A/000/999/4847N07223W005
A) CYDO B) 2301241751 C) 2301251751
E) RSC 11/29 100 PCT 1/8IN DRY SNOW. VA ID JAN 24 1751 - JAN 24 2100.

ADDN NON-GRF/TA PA INFO:
CRFI 11/29 NR.

FR:
RSC 11/29 100 PCT 1/8IN NEIGE SECHE. VA IDE JAN 24 1751 - JAN 24 2100.

INFO ADDN NON-GRF/TA PA:
CRFI 11/29 NR.)

(H0055/23 NOTAMR H3562/22
Q) CZXX/QOECX/IV/NBO/E/000/999/5440N06941W999
A) CZU CZQM CZQB B) 2301111839 C) 2304121800EST
E) AN ACFT, REGARDLESS OF THE STATE OF REGISTRY, DIRECTLY OR INDIRECTLY OWNED, CHARTERED, LEASED, OPERATED OR OTHERWISE CONTROLLED BY A PERSON CONNECTED WITH EITHER THE RUSSIAN FEDERATION OR OF BEARUS OR BY A CORPORATION OR ENTITY THAT IS INCORPORATED OR FORMED UNDER THE LAWS OF THE RUSSIAN FEDERATION OR BEARUS, AND AIR OPERATORS HOLDING AN AIR OPERATOR CERTIFICATE (AOC) ISSUED BY RUSSIAN FEDERATION AND/OR BEARUSIAN AUTHORITIES ARE PROHIBITED TO ENTER, EXIT OR OVERFLY CANADA'S TERRITORIAL AIRSPACE (INCLUDING FT WITHIN 12NM OF CANADA'S COASTS). EXCEPTIONS PERMITTED FOR ACFT EXPERIENCING IMMEDIATE EMERG.

AUTHORITY OBTAINED PRIOR TO 27 FEB 2022 FOR ACFT AND OPS SUBJECT TO THIS NOTAM ARE REVOKED.

HUMANITARIAN, SAR, MEDEVAC AND ANY OTHER FT SEEKING AN EXCEPTION TO THIS RESTRICTION MUST RECEIVE AUTHORITY GRANTED AFTER 27 FEB 2022 FROM THE MINISTER OF TRANSPORT TO OPERATE IN CANADA'S TERRITORIAL AIRSPACE. AFFECTED ACFT WISHING TO OBTAIN SUCH AN AUTHORITY OR CROSS INTO CANADA'S TERRITORIAL AIRSPACE MAY APPLY TO THE MINISTER OF TRANSPORT AT 1-877-992-6853 OR 1-613-992-6853 OR BY EMAIL AT OPERATIONS.AVIATION(AT)TC.GC.CA.

FR:
TOUS AERONEFS, INDEPENDAMMENT DE L'ETAT D'IMMATRICULATION, DIRECTEMENT OU INDIRECTEMENT PSEDES, AFFRETES, LOUES, EXPLOITES OU CONTROLÉS PAR UNE PERSONNE LIÉE AVEC LA FEDERATION RUSSE OU DU BEARUS OU PAR UNE SOCIÉTÉ OU UNE ENTITÉ INCORPORÉE OU FORMÉE EN VERTU DES LOIS DE LA FEDERATION RUSSE OU DU BEARUS, ET TOUS LES EXPLOITANTS DETENANT UN CERTIFICAT D'EXPLOITANT AERIEN (CEA) EMIS PAR LA FEDERATION RUSSE ET/OU LES AUTORITÉS DU BEARUS SONT INTERDITS D'ENTRER, DE SORTIR OU DE SURVOLER L'ESPACE AERIEN TERRITORIAL DU CANADA (Y COMPRIS LES VOIES A MOINS DE 12 MI LES NAUTIQUES DES CÔTES CANADIENNES). EXCEPTIONS PERMISES POUR LES AERONEFS SUBISSANT DES URGENCES EN VOIE.

TOUTES LES AUTORISATIONS OBTENUES AVANT LE 27 FEB 2022 POUR LES AERONEFS ET LES OPERATIONS SOUMIS A CE NOTAM SONT REVOQUEES.

LES VOIES HUMANITAIRES, SAR, MEDEVAC ET TOUT AUTRE VOIE RECHERCHANT UNE EXCEPTION A CETTE RESTRICTION DOIVENT RECEVOIR UNE AUTORISATION ACCORDEE APRES LE 27 FEB 2022 PAR LE MINISTRE DES TRANSPORTS POUR OPERER DANS L'ESPACE AERIEN TERRITORIAL DU CANADA. LES AERONEFS AFFECTES SOUHAITANT OBTENIR UNE TELLE AUTORISATION OU AUTORISATION D'ENTRER DANS L'ESPACE AERIEN TERRITORIAL CANADIEN PEUVENT FAIRE UNE DEMANDE AU MINISTRE DES TRANSPORTS AU 1-877-992-6853 OU 1-613-992-6853 OU PAR COURRIEL A OPERATIONS.AVIATION(AT)TC.GC.CA)

POTVIN HELI-BASE - CPH4 - Reg

NOTAM

(H0055/23 NOTAMR H3562/22
 Q) CZXX/QOEC/IV/NBO/E/000/999/5440N06941W999
 A) CZU CZQM CZQX B) 2301111839 C) 2304121800EST
 E) A ACFT, REGARD ESS OF THE STATE OF REGISTRY, DIRECT Y OR INDIRECT Y OWNED, CHARTERED, EASED, OPERATED OR OTHERWISE CONTROLLED BY A PERSON CONNECTED WITH EITHER THE RUSSIAN FEDERATION OR OF BE ARUS OR BY A CORPORATION OR ENTITY THAT IS INCORPORATED OR FORMED UNDER THE LAWS OF THE RUSSIAN FEDERATION OR BE ARUS, AND A OPERATORS HOLDING AN AIR OPERATOR CERTIFICATE (AOC) ISSUED BY RUSSIAN FEDERATION AND/OR BE ARUSIAN AUTHORITIES ARE PROHIBITED TO ENTER, EXIT OR OVERFLY CANADA'S TERRITORIAL AIRSPACE (INCLUDING F T WITHIN 12NM OF CANADA'S COASTS). EXCEPTIONS PERMITTED FOR ACFT EXPERIENCING INF IGH T EMERG.

A AUTH OBTAINED PRIOR TO 27 FEB 2022 FOR ACFT AND OPS SUBJECT TO THIS NOTAM ARE REVOKED.

HUMANITARIAN, SAR, MEDEVAC AND ANY OTHER F T SEEKING AN EXCEPTION TO THIS RESTRICTION MUST RECEIVE AUTH GRANTED AFTER 27 FEB 2022 FM THE MINISTER OF TRANSPORT TO OPERATE IN CANADA'S TERRITORIAL AIRSPACE. AFFECTED ACFT WISHING TO OBTAIN SUCH AN AUTH OR C R INTO CANADA'S TERRITORIAL AIRSPACE MAY APP Y TO THE MINISTER OF TRANSPORT AT 1-877-992-6853 OR 1-613-992-6853 OR BY EMAIL AT OPERATIONS.AVIATION(AT)TC.GC.CA.

FR:
 TOUS AERONEFS, INDEPENDAMMENT DE 'ETAT D'IMMATRICULATION, DIRECTEMENT OU INDIRECTEMENT POSSEDES, AFFRETES, LOUES, EXPLOITES OU CONTROLÉS PAR UNE PERSONNE LIÉE AVEC LA FEDERATION RUSSE OU DU BE ARUS OU PAR UNE SOCIÉTÉ OU UNE ENTITÉ INCORPORÉE OU FORMÉE EN VERTU DES LOIS DE LA FEDERATION RUSSE OU DU BE ARUS, ET TOUS LES EXPLOITANTS DÉTENANT UN CERTIFICAT D'EXPLOITANT AÉRIEN (CEA) ÉMIS PAR LA FEDERATION RUSSE ET/OU LES AUTORITÉS DU BE ARUS SONT INTERDITS D'ENTRER, DE SORTIR OU DE SURVOLER L'ESPACE AÉRIEN TERRITORIAL DU CANADA (Y COMPRIS CE VO A MOINS DE 12 MILES NAUTIQUES DES CÔTES CANADIENNES). EXCEPTIONS PERMISES POUR LES AERONEFS SUBISSANT DES URGENCES EN VOL.

TOUTES LES AUTORISATIONS OBTENUES AVANT LE 27 FEB 2022 POUR LES AERONEFS ET LES OPERATIONS SOUMIS A CE NOTAM SONT REVOQUEES.

LES VOIS HUMANITAIRES, SAR, MEDEVAC ET TOUT AUTRE VOL RECHERCHANT UNE EXCEPTION A CETTE RESTRICTION DOIVENT RECEVOIR UNE AUTORISATION ACCORDEE APRES LE 27 FEB 2022 PAR LE MINISTRE DES TRANSPORTS POUR OPERER DANS L'ESPACE AERIEEN TERRITORIAL DU CANADA. LES AERONEFS AFFECTES SOUHAITANT OBTENIR UNE TELLE AUTORISATION OU AUTORISATION D'ENTRER DANS L'ESPACE AERIEEN TERRITORIAL CANADIEN PEUVENT FAIRE UNE DEMANDE AU MINISTRE DES TRANSPORTS AU 1-877-992-6853 OU 1-613-992-6853 OU PAR COURRIEL A OPERATIONS.AVIATION(AT)TC.GC.CA)

(H0137/23 NOTAMR H0132/23
 Q) CZXX/QXXX/I/NBO/W/000/999/5243N05321W999
 A) CZU CZQX CZQM B) 2301181713 C) 2301260901
 E) AIRSPACE SECURITY WARNING ISSUED BY THE DEPARTMENT OF TRANSPORT IN RESPONSE TO THE SECURITY SITUATION IN NORTH KOREA. CANADIAN AIR OPERATORS AND OWNERS OF AIRCRAFT REGISTERED IN CANADA ARE ADVISED NOT TO ENTER THE PYONGYANG FIR (ZKPP), DUE TO POTENTIAL RISK TO AVIATION FROM BALLISTIC MISSILE LAUNCHES WITHOUT PRIOR NOTICE. THIS NOTAM SUPERSEDES THE RESTRICTIONS CONCERNING NORTH KOREA ISSUED IN AIC 35/22.

FR:
 AVERTISSEMENT REATIF A LA SECURITE DE L'ESPACE AERIEEN EMIS PAR LE MINISTERE DES TRANSPORTS EN REPONSE A LA SITUATION DE SECURITE EN COREE DU NORD. ON RECOMMANDE AUX EXPLOITANTS AERIENS CANADIENS ET PROPRIETAIRES D'AVIONS IMMATRICULES AU CANADA DE NE PAS PENETRER DANS LA REGION D'INFORMATION DE VOL DE PYONGYANG (ZKPP), EN RAISON DU RISQUE POTENTIEL POUR L'AVIATION AUX ANCIENS DE MISSILES BALLISTIQUES SANS PREAVIS EN COREE DU NORD. CE NOTAM REMPLACE LES RESTRICTIONS CONCERNANT LA COREE DU NORD PUBLIEES DANS L'AIC 35/22.)

(H0077/23 NOTAMR
 Q) CZU /QRRCA/IV/B0/W/310/999/4957N07051W084
 A) CZU B) 2301161400 C) 2303102359
 D) MON 1400-0200 TUE-FRI 1400-2359
 E) RESTRICTED AREA CYR665 BAGOTVI EFFECTIVE FROM FEB 310 TO UN

FR:
 ZONE REGLEMENTEE CYR665 BAGOTVI EFFECTIVE FROM FEB 310 A UN
 F) FEB 310 G) UN)

ALMA - CYTF - Cert

NOTAM

(B5844/23 NOTAMR B5801/23
Q) CZU /QFAXX/IV/NBO/A/000/999/4831N07138W005
A) CYTF B) 2301242038 C) 2301252038
E) RSC 13/31 20 PCT COMPACTED SNOW. 85FT WIDTH. REMAINING WIDTH
COMPACTED SNOW. VA ID JAN 24 2038 - JAN 25 2038.

ADDN NON-GRF/TA PA INFO:
CRFI 13 NR/NR/NR.
CRFI 31 NR/NR/NR.

FR:
RSC 13/31 20 PCT NEIGE DURCIE. 85FT DE ARGEUR. ARGEUR RESTANTE
NEIGE DURCIE. VA IDE JAN 24 2038 - JAN 25 2038.

INFO ADDN NON-GRF/TA PA:
CRFI 13 NR/NR/NR.
CRFI 31 NR/NR/NR.)

(H0055/23 NOTAMR H3562/22
Q) CZXX/QOECH/IV/NBO/E/000/999/5440N06941W999
A) CZU CZQM CZQX B) 2301111839 C) 2304121800EST
E) A ACFT, REGARD ESS OF THE STATE OF REGISTRY, DIRECT Y OR
INDIRECT Y OWNED, CHARTERED, EASED, OPERATED OR OTHERWISE
CONTRO ED BY A PERSON CONNECTED WITH EITHER THE RUSSIAN
FEDERATION OR OF BE ARUS OR BY A CORPORATION OR ENTITY THAT IS
INCORPORATED OR FORMED UNDER THE AWS OF THE RUSSIAN FEDERATION
OR BE ARUS, AND A OPERATORS HO DING AN AIR OPERATOR CERTIFICATE
(AOC) ISSUED BY RUSSIAN FEDERATION AND/OR BE ARUSIAN AUTHORITIES
ARE PROHIBITED TO ENTER, EXIT OR OVERF Y CANADA'S TERRITORIA
AIRSPACE (INC UDING F T WITHIN 12NM OF CANADA'S COASTS).
EXCEPTIONS PERMITTED FOR ACFT EXPERIENCING INF IGH T EMERG.

A AUTH OBTAINED PRIOR TO 27 FEB 2022 FOR ACFT AND OPS SUBJECT
TO THIS NOTAM ARE REVOKED.

HUMANITARIAN, SAR, MEDEVAC AND ANY OTHER F T SEEKING AN EXCEPTION
TO THIS RESTRICTION MUST RECEIVE AUTH GRANTED AFTER 27 FEB 2022
FM THE MINISTER OF TRANSPORT TO OPERATE IN CANADA'S TERRITORIA
AIRSPACE. AFFECTED ACFT WISHING TO OBTAIN SUCH AN AUTH OR C R
INTO CANADA'S TERRITORIA AIRSPACE MAY APP Y TO THE MINISTER OF
TRANSPORT AT 1-877-992-6853 OR 1-613-992-6853 OR BY EMAI AT
OPERATIONS.AVIATION(AT)TC.GC.CA.

FR:
TOUS AERONEFS, INDEPENDAMMENT DE 'ETAT D'IMMATICU ATION,
DIRECTEMENT OU INDIRECTEMENT POSSEDES, AFFRETES, OUES, EXP OITES
OU CONTRO ES PAR UNE PERSONNE IEE AVEC A FEDERATION RUSSE OU DU
BE ARUS OU PAR UNE SOCIETE OU UNE ENTITE INCORPOREE OU FORMEE EN
VERTU DES OIS DE A FEDERATION RUSSE OU DU BE ARUS, ET TOUS ES
EXP OITANTS DETENANT UN CERTIFICAT D'EXP OITANT AERIEN (CEA)
PAR A FEDERATION RUSSE ET/OU ES AUTORITES DU BE ARUS SONT
INTERDITS D'ENTRER,
DE SORTIR OU DE SURVO ER 'ESPACE AERIEN
TERRITORIA DU CANADA (Y COMPRIS E VO A MOINS DE 12 MI ES
NAUTIQUES DES COTES CANADIENNES). EXCEPTIONS PERMISES POUR ES
AERONEFS SUBISSANT DES URGENCES EN VO .

TOUTES ES AUTORISATIONS OBTENUES AVANT E 27 FEB 2022 POUR ES
AERONEFS ET ES OPERATIONS SOUMIS A CE NOTAM SONT REVOQUEES.

ES VO S HUMANITAIRES, SAR, MEDEVAC ET TOUT AUTRE VO RECHERCHANT
UNE EXCEPTION A CETTE RESTRICTION DOIVENT RECEVOIR UNE
AUTORISATION ACCORDEE APRES E 27 FEB 2022 PAR E MINISTRE DES
TRANSPORTS POUR OPERER DANS 'ESPACE AERIEN TERRITORIA DU
CANADA. ES AERONEFS AFFECTES SOUHAITANT OBTENIR UNE TE E
AUTORISATION OU AUTORISATION D'ENTRER DANS 'ESPACE AERIEN
TERRITORIA CANADIEN PEUVENT FAIRE UNE DEMANDE AU MINISTRE DES
TRANSPORTS AU 1-877-992-6853 OU 1-613-992-6853 OU PAR COURRIE A
OPERATIONS.AVIATION(AT)TC.GC.CA)

(N0116/23 NOTAMN
Q) CZU /QSF C/IV/B/A/000/999/4831N07138W005
A) CYTF B) 2301161700 C) 2301262030
E) UNIVERSA COM (UNICOM) 122.35MHZ C SD

FR:
COM UNIVERSE ES (UNICOM) 122.35MHZ C SD)

(H0137/23 NOTAMR H0132/23
Q) CZXX/QXXX/I/NBO/W/000/999/5243N05321W999
A) CZU CZQX CZQM B) 2301181713 C) 2301260901
E) AIRSPACE SECURITY WARNING ISSUED BY THE DEPARTMENT OF TRANSPORT
IN RESPONSE TO THE SECURITY SITUATION IN NORTH KOREA. CANADIAN
AIR OPERATORS AND OWNERS OF AIRCRAFT REGISTERED IN CANADA ARE
ADVISED NOT TO ENTER THE PYONGYANG FIR (ZKPP), DUE TO POTENTIA
RISK TO AVIATION FROM BA ISTIC MISSI E AUNCHES WITHOUT PRIOR
NOTICE. THIS NOTAM SUPERSEDES THE RESTRICTIONS CONCERNING NORTH
KOREA ISSUED IN AIC 35/22.

FR:
AVERTISSEMENT RE ATIF A A SECURITE DE 'ESPACE AERIEN EMIS PAR
E MINISTRE DES TRANSPORTS EN REPONSE A A SITUATION DE SECURITE

EN COREE DU NORD. ON RECOMMANDE AUX EXPLOITANTS AERIENS CANADIENS
ET PROPRIETAIRES D'AVIONS IMMATRICULES AU CANADA DE NE PAS
PENETREER DANS LA REGION D'INFORMATION DE VOIE DE PYONGYANG (ZKPP),
EN RAISON DU RISQUE POTENTIEL POUR L'AVIATION AUX ANCIENS DE
MISSES STATISTIQUES SANS PREAVIS EN COREE DU NORD. CE NOTAM
REMPLE LES RESTRICTIONS CONCERNANT LA COREE DU NORD PUBLIEES
DANS L'AIC 35/22.)

QUEBEC

AERODROME / FACILITY DIRECTORY

ROBERVAL QC

CYRJ

REF	N48 31 12 W72 15 57 2W 17°W (2013) UTC-5(4) Elev 586' A5010 LO6 LO7 HI5 HI6 CAP	
OPR	Services ADR Inc 418-275-2344 Cert	
PF	A-6,7,8 C-1,2,3,4,5	
FLT PLN	(bil)	
FIC	Québec 866-GOMÉTÉO or 866-WXBRIEF (Toll free within Canada) or 866-541-4105 (Toll free within Canada & USA)	
ACC WX	Montréal 800-633-1353 METAR H24. TAF 13-03Z†, issue times: 13, 20Z (DT 12, 14, 20Z).	
SERVICES		
FUEL	100LL, JA-1	
OIL	15W50, W100, W100+, Turbine Oil	
S	1,4,5,6	
PVT ADV	Services ADR Inc 130.3 1200-2200Z† Mon-Fri, 1300-2100Z† Sat-Sun ltd availability.	
RWY DATA	Rwy 16(160°)/34(340°) 5000x150 asphalt Rwy 16 down 0.52%	
RWY CERT	Rwy 16/34 AGN IIIA	
APRON	Advs Services ADR Inc on 130.3 for prkg. ltd availability.	
RCR	Opr 1200-2200Z† Mon-Fri 1300-2100Z† Sat-Sun. O/T for MEDEVAC 2 hr PN for RSC/CRFI, 3 hr PN for win maint. O/T for other acct 6 hr PN for RSC/CRFI and win maint. Call out chg 418-275-2344 PCN	
LIGHTING	16-AO(TE ME), 34-AO(TE ME) P2 ARCAL-122.2 type K	
COMM	(bil)	
RCO	Rouyn rdo 122.2 (RAAS) 11-03Z† Québec rdo 123.55 5680 (FISE) 126.7 (bcst)	
MF	Rouyn rdo 11-03Z† O/T tfc 122.2 5NM 3600 ASL (CAR 602.98)	
NAV		
NDB	RJ 378 (M) N48 32 41 W72 17 40	
CAUTION	Powerline W of thld Rwy 34 infringes lateral zoning.	

QUEBEC

AERODROME / FACILITY DIRECTORY

DOLBEAU-ST-FÉLICIEN QC

CYDO

REF	N48 46 36 W72 22 30 8.5SW 16°W (2020) UTC-5(4) Elev 373' A5010 LO7 HI1 HI5 HI6 CAP	
OPR	Régie de l'Aéroport DM-N-F 418-679-3543/7621 or 418-637-0188 Reg Ldg fees (commercial acft)	
PF	A-1,7 (ltd hrs) C-3,4,5,6 D-2	
FLT PLN	(bil)	
FIC	Québec 866-GOMÉTÉO or 866-WXBRIEF (Toll free w/ in Canada) or 866-541-4105 (Toll free within Canada & USA)	
ACC	Montréal 800-633-1353	
SERVICES	13-21Z±	
FUEL	100LL, JA-1 418-637-0188	
OIL	All	
S	1,2,3,4,5,6	
RWY DATA	Rwy 11(110°)/29(290°) 5001x100 ASPH Rwy 03(032°)/21(212°) 3563x72 GRVL Cisd Nov 01-Apr 30	
RCR	Opr	
LIGHTING	11-AS(TE ME) P1, 29-AS(TE ME) P1 ARCAL-122.7 type K	
COMM	(bil)	
ATF	UNICOM Ltd hrs O/T t/c 122.7 5NM 3400 ASL	

QUEBEC

AERODROME / FACILITY DIRECTORY

DOLBEAU-MISTASSINI / POTVIN HELI-BASE QC (Heli)

CPH4

REF	N48 55 51 W72 12 18 17°W (2014) UTC-5(4) Elev 425' A5010
OPR	R. Potvin 418-671-1222 Reg PPR
FLT PLN	
FIC	Québec 866-GOMÉTÉO or 866-WXBRIEF (Toll free within Canada) or 866-541-4105 (Toll free within Canada & USA)
HELI DATA	24' x 60' asphalt
RCR	Opr
COMM	
ATF	tfc 123.2 5NM 3500 ASL

QUEBEC

AERODROME / FACILITY DIRECTORY

ALMA QC

CYTF

REF	N48 30 31 W71 38 29 2.2S 17°W (2014) UTC-5(4) Elev 448' A5010 LO6 LO7 HI5 HI6 CAP	
OPR	CIDAL 418-669-5104 13-21Z± Mon-Fri Cert Ldg fees, tml fees	
PF	A-1 C-2,3,4,5,6	
FLT PLN	(bil) FIG Québec 866-GOMÉTÉO or 866-WXBRIEF (Toll free w/ in Canada) or 866-541-4105 (Toll free within Canada & USA) ACC Montréal 800-633-1353 WX AUTO 418-669-5406 (see COMM)	
SERVICES	1230-2130Z± Mon-Fri exc hols, O/T 1 hr PN 418-480-8686. Call out chg may be levied for one or more svcs.	
FUEL	100LL (fuel management tml avbl, ctc opr to receive code), JA-1 (FSII avbl), SP	
S	1(Ltd),2,3,4,5,6	
JASU	Electric start 10/15	
RWY DATA	Rwy 13(131°)/31(311°) 5000x100 ASPH Rwy 31 down 0.37%	
RWY CERT	Rwy 13/31 AGN IIIA	
TWY CERT	Twy A AGN II	
RCR	Opr CRF1 Win maint O/R 1530-2130Z± Mon-Fri exc hols, O/T 3 hrs PN 418-480-8686, call out chg may be levied. PLR/PCN	
LIGHTING	13-AO(TE ME), 31-AO(TE ME) ARCAL-122.35 type K	
COMM	(bil) Prior dep pilots must ctc Bagotville Tml for IFR clnc at 888-813-8508.	
CLNC DEL	UNICOM 1330-2030Z± Mon-Fri, exc hols (CAR 602.98) O/T tfc 122.35	
MF/ATF	5NM excluding CYBG class D airspace. Class D airspace begins at 1200 AGL. (Refer to Bagotville VTPC)	
TML	Bagotville 127.2 227.6	
VFR ADV	Bagotville Tml 121.2	
AUTO	123.175	
NAV	DME ITF 110.7 Ch 44 N48 30 14 W71 37 47 (458') LOC ITF 110.7 (Rwy 13) LOC reliable only within 10° either side of centreline.	
PRO	Several areas of Class F of restricted airspace (CYRs) have been established in the Alma area for flight testing of Remotely Piloted Aircraft (RPA). These CYRs are activated occasionally by NOTAM with 48 hours prior notice. No person shall operate an aircraft within an active CYR unless the flight has been authorized by the User Agency as stated in the Designated Airspace Handbook (DAH). When CYR651 is active and access to the Alma airport is required, to avoid delays pilots should make prior arrangements with the User Agency for authorization to operate within the CYR. Pilots can contact Alma UNICOM MF 122.35 for authorization but unless the flight is essential such as MEDEVAC, police, emergency, etc., access may be delayed. Once authorized, pilots must enter and exit CYR651 from the northeast and operations are restricted to circuit procedures for arrivals and departures from the airport only. See Alma VTPC for a depiction of the CYRs.	
CAUTION	Parachute jumps over apt to 12,500 ASL, (DT 12-24Z) May-Sep. Possible win maint eqpt on rwy outside ops hrs. Migratory bird activity Apr-May & Sep-Oct.	